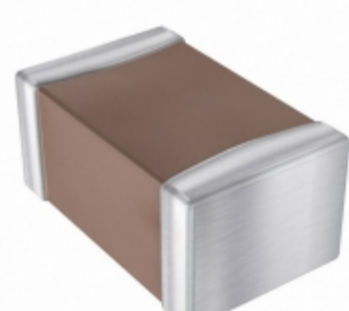


**08051A560GAT2A**



**Part Number:** 08051A560GAT2A  
**Manufacturer:** AVX Corporation  
**Description:** CAP CER 56PF 100V C0G/NP0 0805  
**Data sheet:** [Part Number Explanation](#)  
[C0G\(NP0\) Dielectric](#)  
[Ceramic Cap Catalog](#)

**RoHS Status:** Lead free / RoHS Compliant  
**Ship From:** Hong Kong  
**Shipment Way:** DHL/Fedex/TNT/UPS/EMS

Images are for reference only.  
 See Product Specifications for product details.  
 Buy 08051A560GAT2A with confidence from  
 Component-World.HK, 1 Year Warranty

[Request For Quotation](#)

**PRODUCT PARAMETER**

<b>Part Number</b>	08051A560GAT2A	<b>Manufacturer</b>	<a href="#">AVX Corporation</a>
<b>Description</b>	CAP CER 56PF 100V C0G/NP0 0805	<b>Lead Free Status / RoHS Status</b>	Lead free / RoHS Compliant
<b>Quantity Available</b>	684090 pcs	<b>Data sheet</b>	<a href="#">Part Number Explanation</a> <a href="#">C0G(NP0) Dielectric</a> <a href="#">Ceramic Cap Catalog</a>
<b>Category</b>	<a href="#">Capacitors</a>	<b>Voltage Rating - AC</b>	-
<b>Voltage - Rated</b>	100V	<b>Tolerance</b>	56pF
<b>Thickness (Max)</b>	C0G, NP0	<b>Surface Mount Land Size</b>	-
<b>Size / Dimension</b>	0.079" L x 0.049" W (2.01mm x 1.25mm)	<b>Series</b>	-
<b>RoHS Status</b>	Tape & Reel (TR)	<b>Ripple Current - Low Frequency</b>	General Purpose
<b>Ratings</b>	-	<b>Polarization</b>	0805 (2012 Metric)
<b>Operating Temperature</b>	-55°C ~ 125°C	<b>Mounting Type</b>	Surface Mount, MLCC
<b>Moisture Sensitivity Level (MSL)</b>	1 (Unlimited)	<b>Manufacturer Part Number</b>	08051A560GAT2A
<b>Lead Style</b>	0.037" (0.94mm)	<b>Height - Seated (Max)</b>	-
<b>Features</b>	-	<b>Failure Rate</b>	-
<b>Expanded Description</b>	56pF ±2% 100V Ceramic Capacitor C0G, NP0 0805 (2012 Metric)	<b>ESR (Equivalent Series Resistance)</b>	±2%
<b>Description</b>	CAP CER 56PF 100V C0G/NP0 0805		

Component-World.com is a Reliable Stocking Distributor of Electronic Components. We specialize in all AVX Corporation series electronic components. We have 684090 pieces of AVX Corporation 08051A560GAT2A in stock available now. Request a quote from electronics components distributor at Component-World.com, our sales team will contact you within 24 hours.

RFQ Email: [info@Components-World.com](mailto:info@Components-World.com)

**RELATED PRODUCTS**

	<b>Part#:</b> <a href="#">08051A561GAT2A</a> <b>Description:</b> CAP CER 560PF 100V NP0 0805	<b>Manufacturers:</b> <a href="#">AVX Corporation</a>	<a href="#">RFQ</a>
	<b>Part#:</b> <a href="#">08051A560FAT4A</a> <b>Description:</b> CAP CER 56PF 100V C0G/NP0 0805	<b>Manufacturers:</b> <a href="#">AVX Corporation</a>	<a href="#">RFQ</a>
	<b>Part#:</b> <a href="#">08051A560GAT4A</a> <b>Description:</b> CAP CER 56PF 100V C0G/NP0 0805	<b>Manufacturers:</b> <a href="#">AVX Corporation</a>	<a href="#">RFQ</a>
	<b>Part#:</b> <a href="#">08051A511FAT2A</a> <b>Description:</b> CAP CER 510PF 100V NP0 0805	<b>Manufacturers:</b> <a href="#">AVX Corporation</a>	<a href="#">RFQ</a>
	<b>Part#:</b> <a href="#">08051A510JAT2A</a> <b>Description:</b> CAP CER 51PF 100V C0G/NP0 0805	<b>Manufacturers:</b> <a href="#">AVX Corporation</a>	<a href="#">RFQ</a>
	<b>Part#:</b> <a href="#">08051A560FA12A</a> <b>Description:</b> CAP CER 56PF 100V NP0 0805	<b>Manufacturers:</b> <a href="#">AVX Corporation</a>	<a href="#">RFQ</a>
	<b>Part#:</b> <a href="#">08051A561JA16A</a> <b>Description:</b> CAP CER 560PF 100V NP0 0805	<b>Manufacturers:</b> <a href="#">AVX Corporation</a>	<a href="#">RFQ</a>
	<b>Part#:</b> <a href="#">08051A511JAT2A</a> <b>Description:</b> CAP CER 510PF 100V NP0 0805	<b>Manufacturers:</b> <a href="#">AVX Corporation</a>	<a href="#">RFQ</a>
	<b>Part#:</b> <a href="#">08051A510JAT4A</a> <b>Description:</b> CAP CER 51PF 100V C0G/NP0 0805	<b>Manufacturers:</b> <a href="#">AVX Corporation</a>	<a href="#">RFQ</a>
	<b>Part#:</b> <a href="#">08051A561J4T2A</a> <b>Description:</b> CAP CER 560PF 100V NP0 0805	<b>Manufacturers:</b> <a href="#">AVX Corporation</a>	<a href="#">RFQ</a>
	<b>Part#:</b> <a href="#">08051A560FAT2A</a> <b>Description:</b> CAP CER 56PF 100V C0G/NP0 0805	<b>Manufacturers:</b> <a href="#">AVX Corporation</a>	<a href="#">RFQ</a>
	<b>Part#:</b> <a href="#">08051A561FAT2A</a> <b>Description:</b> CAP CER 560PF 100V NP0 0805	<b>Manufacturers:</b> <a href="#">AVX Corporation</a>	<a href="#">RFQ</a>
	<b>Part#:</b> <a href="#">08051A510KAT2A</a> <b>Description:</b> CAP CER 51PF 100V NP0 0805	<b>Manufacturers:</b> <a href="#">AVX Corporation</a>	<a href="#">RFQ</a>
	<b>Part#:</b> <a href="#">08051A560JAT2A</a> <b>Description:</b> CAP CER 56PF 100V C0G/NP0 0805	<b>Manufacturers:</b> <a href="#">AVX Corporation</a>	<a href="#">RFQ</a>
	<b>Part#:</b> <a href="#">08051A560JAT9A</a> <b>Description:</b> CAP CER 56PF 100V C0G/NP0 0805	<b>Manufacturers:</b> <a href="#">AVX Corporation</a>	<a href="#">RFQ</a>
	<b>Part#:</b> <a href="#">08051A560KAT2A</a> <b>Description:</b> CAP CER 56PF 100V NP0 0805	<b>Manufacturers:</b> <a href="#">AVX Corporation</a>	<a href="#">RFQ</a>
	<b>Part#:</b> <a href="#">08051A561JAJ2A</a> <b>Description:</b> CAP CER 560PF 100V NP0 0805	<b>Manufacturers:</b> <a href="#">AVX Corporation</a>	<a href="#">RFQ</a>
	<b>Part#:</b> <a href="#">08051A511GAT2A</a> <b>Description:</b> CAP CER 510PF 100V NP0 0805	<b>Manufacturers:</b> <a href="#">AVX Corporation</a>	<a href="#">RFQ</a>
	<b>Part#:</b> <a href="#">08051A510MAT4A</a> <b>Description:</b> CAP CER 51PF 100V NP0 0805	<b>Manufacturers:</b> <a href="#">AVX Corporation</a>	<a href="#">RFQ</a>
	<b>Part#:</b> <a href="#">08051A560JAT4A</a> <b>Description:</b> CAP CER 56PF 100V C0G/NP0 0805	<b>Manufacturers:</b> <a href="#">AVX Corporation</a>	<a href="#">RFQ</a>

**Related keywords for 08051A560GAT2A**

<a href="#">AVX Corporation 08051A560GAT2A</a>	<a href="#">08051A560GAT2A distributor</a>	<a href="#">08051A560GAT2A supplier</a>	<a href="#">08051A560GAT2A price</a>
<a href="#">08051A560GAT2A download datasheet</a>	<a href="#">08051A560GAT2A datasheet</a>	<a href="#">08051A560GAT2A stock</a>	<a href="#">buy 08051A560GAT2A</a>
<a href="#">AVX Corporation 08051A560GAT2A</a>	<a href="#">AVX Corporation [MIL] 08051A560GAT2A</a>		